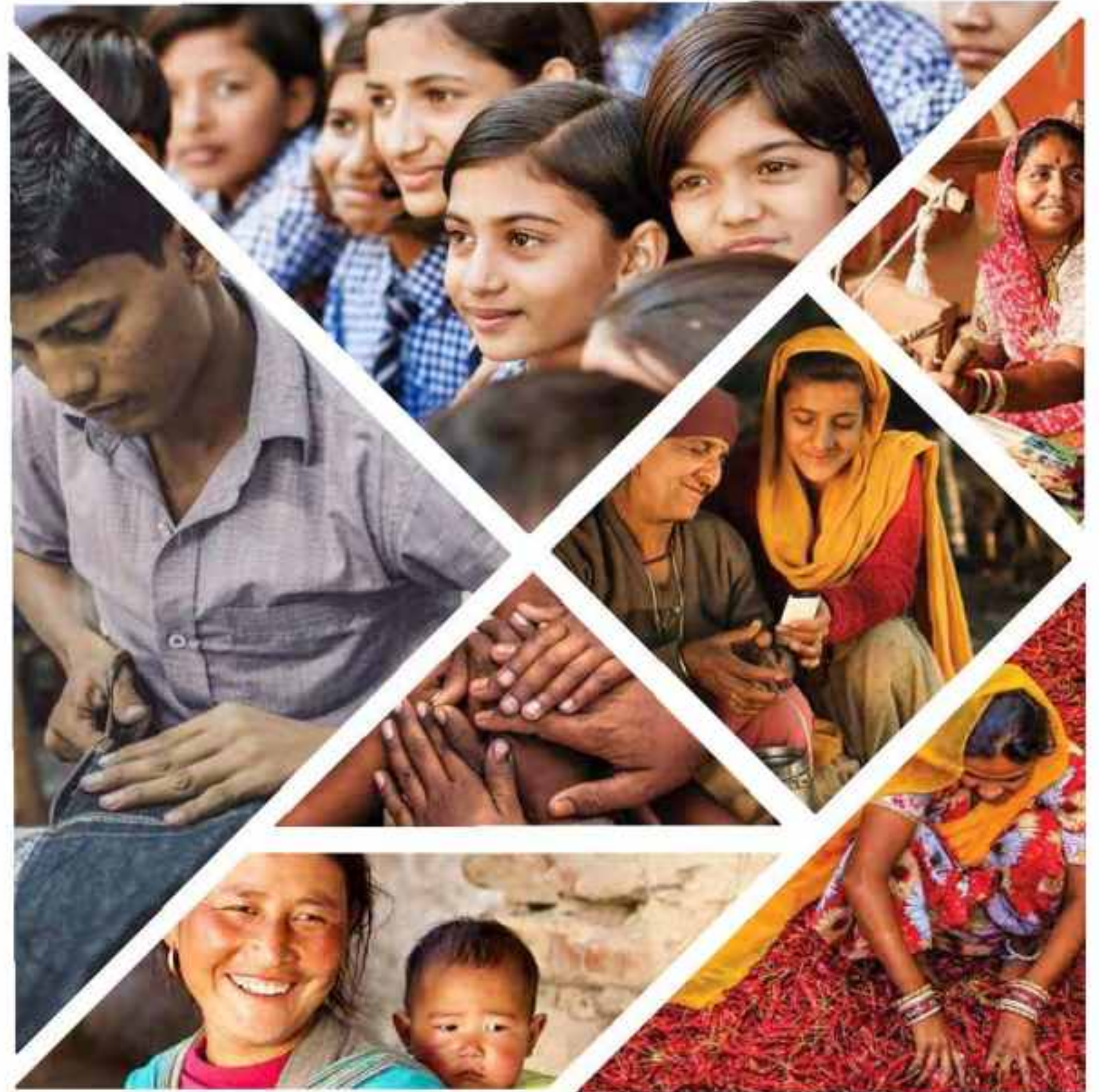




# IMPACT MEASUREMENT AND ADVISORY

July 2021

[www.sattva.co.in](http://www.sattva.co.in)





# INTRODUCTION



# About Us

We are an organisation driven by the mission to end poverty in our lifetime. Our work focuses on scalable solutions for sustainable social impact.

We work with our clients - corporations, philanthropists, foundations and social organisations - to achieve social impact goals effectively and maximise the social return on their investment.

Deep understanding across sectors and collaboration with multiple stakeholders drive our work. This approach helps us and our clients develop holistic solutions for solving critical societal problems.

We offer end-to-end support covering :

- Research
- Strategy consulting
- Implementation support
- Programme design and management
- Monitoring and Evaluation
- Impact assessment
- Social audit
- Talent solutions
- Organisation development programmes
- Data and technology products

and more as needed in our quest for better solutions.



[www.sattva.co.in](http://www.sattva.co.in)

📍 Bangalore | Mumbai | Delhi



# Sattva's Experience and Expertise in Impact Assessment

## Experience

- **300+** studies across **130+** assignments
- **25 person years** of experience
- **Access** to knowledge and data insights of Sattva



## Clients

- Corporates, MNCs, Corporate Foundations, Conglomerates
- Reputed NGOs
- Impact Investment Firms and Philanthropic Foundations



## Proprietary

- Customised frameworks
- Data collection tools
- Standardised processes
- Exhaustive base of thematic indicators



## Diverse Sectors

- Agriculture and Allied activities
- Education, Sports, Skilling, and Livelihood
- Healthcare and Nutrition
- WASH and Natural Resource Management



# Our Footprint

Since 2009, Sattva has been helping organisations enhance and measure their social impact.





# Sattva's Principle of Impact Assessment

## Assess Impact

### Breadth and Depth of the interventions

- Number of beneficiaries, geographies, communities and institutions
- Knowledge and Skills lead to sustained behaviour change that leads to social, financial, environment changes
- Use a structured framework-led approach to assess the impact and implications of the projects from a short term - mid term - long term perspective

## Strengthen Impact

### Use an outside-in and inside-out approach to improve the impact being created on the ground

- **External view:** Alignment with global and national priorities. Ensure interventions are relevant and coherent with the existing policies to drive scalability of projects
- **Internal view:** Rigour of implementation, efficient use of resources for better return on investment



# Assessment Exercise across the Lifecycle of the Programme

## NEEDS ASSESSMENT

- Identifying needs and aspirations of the community
- Conducted before the inception of the programme

## Planning

## Design

## MONITORING AND EVALUATION

- Institutionalising internal monitoring and impact tracking system (capacity building and setting up a system)
- Defining indicators and outlining the process for continuous monitoring

## PROGRAMME EVALUATION / SOCIAL AUDIT / BRAND PERCEPTION

- Evaluating programme design and progress of activities
- Gathering external inputs to improve performance of the programme/project
- Understanding the community's feedback towards company's operations

## Implementation

## Post Implementation

## IMPACT ASSESSMENT

- Assessing input, output, outcome and impact of the programme against the objectives
- LEAN and INDEPTH approach

← **LONG TERM ASSESSMENTS:** Baseline - Midline - Endline assessment conducted during the course of the project on a selected cohort →



# APPROACH TO IMPACT ASSESSMENT





# The CSR Journey so far...





# Two Focussed offerings for CSR Impact Assessment



## Lean Assessment

- **Lean and robust assessment** with a focus on complying to the CSR law
- Duration of the dipstick study - **6-8 weeks**
- Objective to **improve compliance, communication and funder maturity** via globally accepted frameworks and methodology
- **Templatized and technology-driven** for efficient delivery at scale



## In-depth Assessment

- **Customised assessment** to understand the impact of the programme
- Duration of the study over **12 weeks**
- Objective to **evaluate the health of the project, explore gaps, understand pathways** for deeper impact based on social return on investment
- **Exhaustive sample, stakeholder insights, and recommendations** drawn from the study to strengthen the impact created
- Backed by **secondary research and Sattva's experience** in the social sector
- **Driven by technology** for efficiency and scale

---

Examples of some projects covered for Impact Assessment:

- 1. Infrastructure projects:** Providing equipments to hospitals to strengthen healthcare services, building community centers in rural areas, refurbishing or remodeling classrooms, building hospitals, installing solar panels (1 year duration)
- 2. Teacher development projects:** Building capability of teachers through multi-year projects that focus on teacher training and professional development, designed with a focus to increase teacher motivation and improve student learning outcomes
- 3. Vocational/Skill training:** Providing industry relevant skill-based training (one year or multi-year) along with linkages to the job market
- 4. Community healthcare:** Creating awareness on communicable/non-communicable diseases, providing mobile vans, setting up health camps

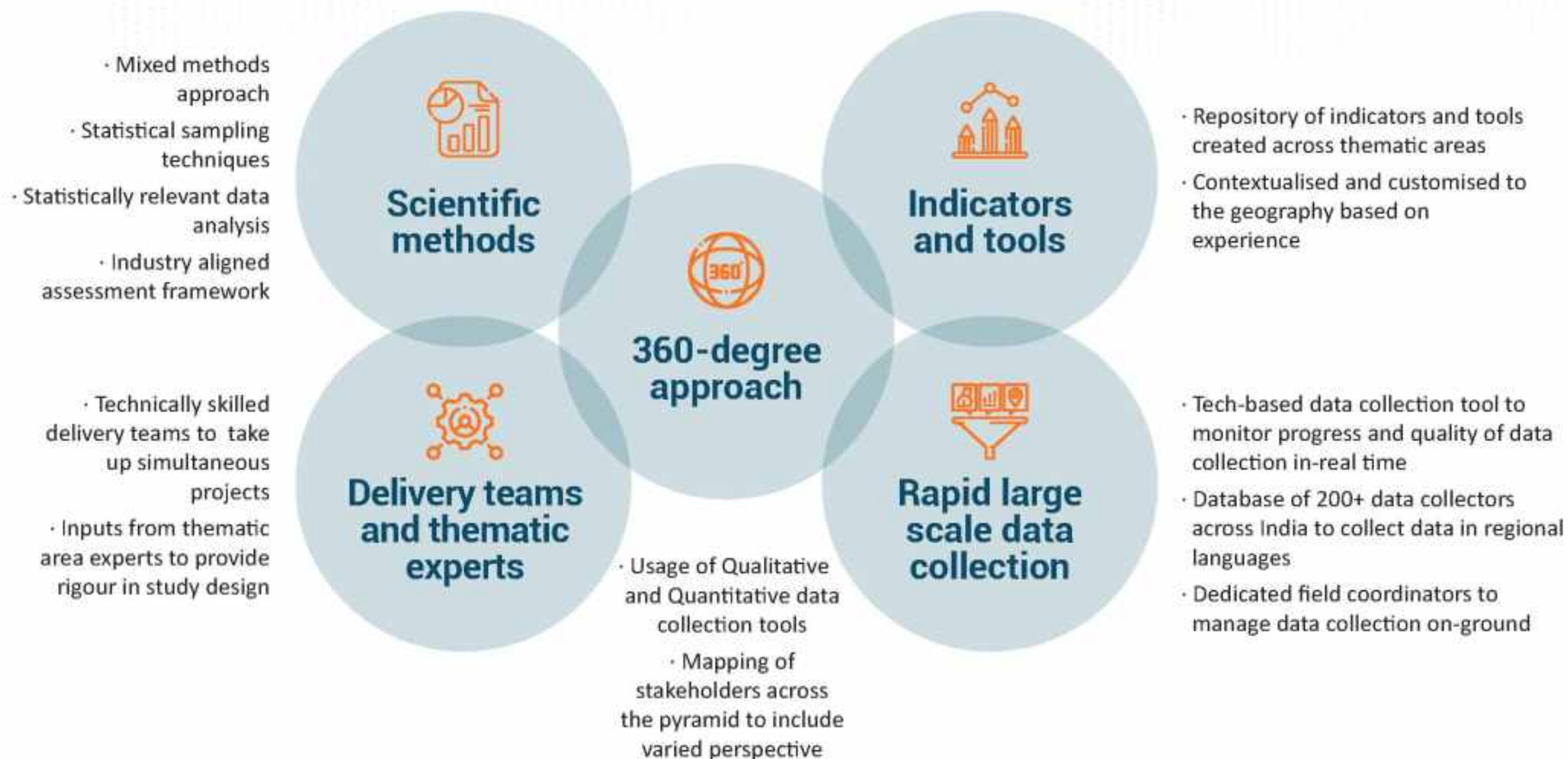


# Aspects of Lean and In-depth Assessment

Activities		Lean Assessment	In-depth Assessment
1	Create a robust methodology through adoption of the OECD DAC Framework to assess on relevance, coherence, effectiveness, efficiency, impact, and sustainability of the project	✓	✓
2	Use a mixed method approach for data collection - Survey for quantitative analysis, coupled with in depth interviews (IDI) and focused group discussions (FGD) for qualitative analysis	Survey sample size of 30-60 IDI & FGD sample size of 10	Sample size is calculated using statistical sampling techniques + case studies
3	Conduct project outreach analysis using data shared by the implementation partner to understand the beneficiaries reached	✓	✓
4	Validate contracts by checking the project status and objective based on the signed terms and conditions and verifying the credibility of the NGO	✓	✓
5	Conduct secondary analysis on the documentation maintained by the implementation partner for the course of the project (such as needs assessment, operational plan, LFA, fund utilisation or expenditure, etc.) and assessment of the team capability	✓	✓
6	Perform perception based assessment to gather change in awareness, attitude, skills using the mixed methods approach. For Infrastructure/facility projects, assess change in accessibility	✓	✓
7	Contextualise a descriptive and cross sectional design and create detailed data collection tools to assess change in awareness, attitude, skills through the mixed methods approach	✗	✓
8	Secondary research to validate and substantiate evaluation of programme and mapping SGDs, other relevant national and international policies to support strengthening of the interventions	✗	✓
9	End deliverable - Document report (up to 40 pages) including an Executive Summary and a Presentation (10-15 slides) for internal and external communication	PPT report (30-40 slides) + PPT Summary (10-15 slides)	Document report + PPT report (option for designed report available)



# Robust approach for both Lean and In-depth Impact Assessment





# Enable decision making across the organisation



# SATTVA'S OFFERINGS



# Sattva addresses the gaps in mandatory third-party assessment



## Multiple ongoing projects at different stages

Large number of projects that are at different stages. How will the assessments of each be managed together?



## Selection of eligible projects

How does one identify eligible projects for impact assessment based on predefined parameters?



## Limited budget for assessment of multiple projects

Limited budget to assess multiple projects as per the law. Would Sattva do it within limited budgets?



## Impact Assessment of Infrastructure projects

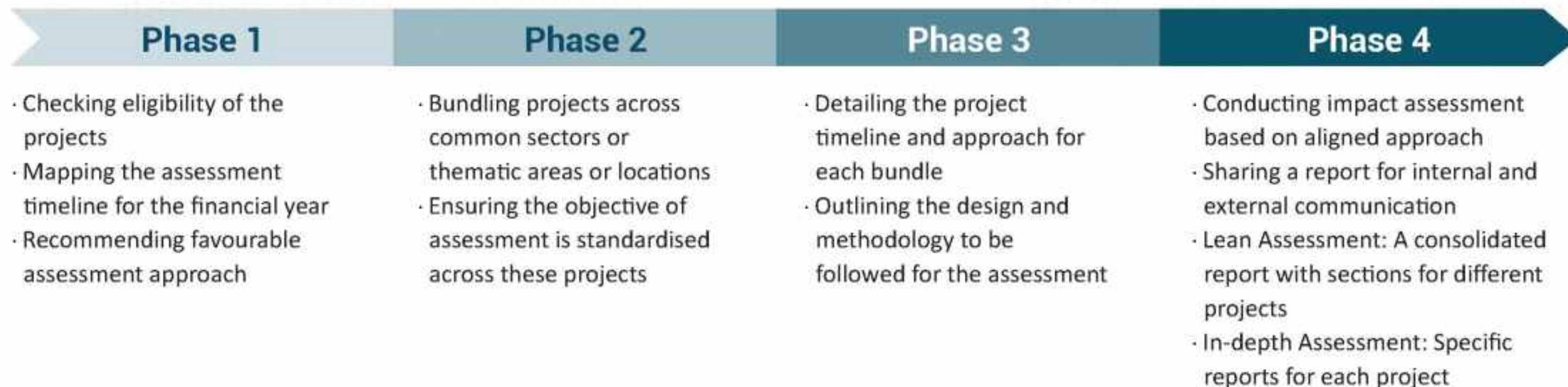
In case the project was construction related, how do you assess the impact of the same?



## Different types of impact assessments

What kind of Impact Assessment should be done as per the new CSR rule? What would it entail?

# Bundled approach for multiple projects



## Value-added Services for Bundled and Annual Contracts



**Complimentary M&E capacity building workshop for 3 partners**



**Complimentary due diligence of 3 NGO partners**



**Special pricing for bundled projects**



# Actionable Recommendations

Sattva shares detailed insights and recommendations to ensure the programmes have:



## Operational capability

Well-qualified resources with relevant experience are implementing the programme



## Well-defined systems and processes

Activities and their milestone are defined and tracked on a periodic basis to measure progress



## Mapped output and outcomes

Identification of process and impact indicators to concurrently measure the status of the programme



## Financial discipline

Resources are being used efficiently and being monitored to avoid duplicity or wastage



# Irrational Commitment to Social Impact

We are driven by impact and powered by knowledge. We bring the right balance of the head-heart-hand to our work.

We believe that age-old problems need new-age thinking and rigorous implementing, with empathy at the core. And that's what we deliver for our customers and partners.

Talk to us today to see how we can co-create maximum social impact.



[www.sattva.co.in](http://www.sattva.co.in)



[impact@sattva.co.in](mailto:impact@sattva.co.in)



[www.facebook.com/SattvaIndia](https://www.facebook.com/SattvaIndia)



[twitter.com/\\_sattva](https://twitter.com/_sattva)



[in.linkedin.com/company/sattva-media-and-consulting-pvt-ltd-](https://in.linkedin.com/company/sattva-media-and-consulting-pvt-ltd-)





# ANNEXURE



# Approach to Data Collection

Sattva will use a combination of in-person and remote (via phone) data collection approach. The in-person data collection will be followed in accordance with safety precautions for COVID-19.



## Recruitment

### Surveyor recruitment

- Screen surveyors basis project requirements
- Initial evaluation via phone interview
- Onboard trained phone surveyors from internal database



## Training

### Training on phone survey protocols

- Surveyors undergo 2-day virtual training
- Day 1: In-house training
- Day 2: Virtual pilot - recording - correction



## Monitoring

### Ensuring collection of high-quality data

- App based data collection
- Call recording, back-checking and concurrent data checking
- Recording data collection
- Clean data



## Data Collection

### Data collection over phone

- App based data collection
- Mature data collection protocols
- Fixed call timings - survey duration - governance process
- Qualitative virtual interviews by Sattva team



## Back-checking

### Establishing data authenticity

- Back calling to respondents to enable respondent verification
- Recording analysis and correction to clean data



# Telephonic Survey: Processes and Best Practices

**01.**

**Surveys will be kept short** - 20 minutes  
Ensuring respondent engagement throughout the call

**02.**

**Multiple attempts to reach the respondents**  
Each respondent will be called at least 4 times over 2 days before abandoning the phone number

**03.**

**Highly qualified data collectors**  
Sattva will employ independent consultants to support with data collection with language proficiency and prior experience

**04.**

**Standardised script**  
Introduction and FAQ's script to be aligned between LFE and Sattva to ensure appropriate brand representation

**05.**

**Piloting the Tool**  
The survey tools will be piloted to ensure the efficiency of the survey

**06.**

**Tool for data collection**  
An online platform will be used to gather reliable, rich data with features like image uploads, background audio, validation checks and resurveying. Appropriate training will be given to use this platform

**07.**

**Backend checks (quality)**  
5% of the total sample surveys will be regularly back checked to ensure best quality data

**08.**

**Regular updates**  
Sattva will share bi-daily updates on the progress of surveys done during the data collection phase

# Ethical Protocols



The study will follow the ethical protocols in all aspects and at all stages of the engagement:

**Program team sensitisation (Sattva as well as enumerators and supervisors):** Given the sensitivity of the proposed research study, the programme team members will undertake sensitisation training to ensure an ethical approach. The team will include members who have worked extensively in the area of primary research and data collection for vulnerable populations.

## **Informed consent and voluntary participation:**

All respondents and participants will be given appropriate and accessible information about the purpose, methods and intended uses of the research, what their participation in the research entails, and what risks and benefits, if any, are involved. The assessment will be undertaken only after consent, free from coercion or undue pressure, is received from the respondents. They will be made aware of their right to refuse participation whenever and for whatever reason they wish, without fear of penalisation or victimisation. Participants will also be made aware of where and for how long their data will be stored and how the data will

be treated. Consent will be taken regarding the recording and usage of all information acquired - written, verbal, photographic.

## **Anonymity and confidentiality:**

The identity of research participants will always be protected through anonymity or confidentiality, unless research participants explicitly agree to, or request the publication of their personal information.



# Data Security



Sattva has in place internal security protocols to protect the privacy of all data collected from respondents, especially any Personally Identifiable Information (PII). The set of protocols listed below may be required to be revamped depending on the data flow process decided for this study.

**Data Storage and Access:** Any devices used for data collection are password-protected to prevent unauthorised access. Preferably, survey software with encryption features, such as SurveyCTO or

Collect are used so that encryption occurs during data collection and transmission to a central server. Data with PII is shared only using encrypted files, unless being shared directly from Sattva's cloud storage. Access to data on Sattva's cloud storage may also be further limited to programme team members who require access.

**Data Retention:** Data with PII is only retained for pre-decided periods based on program requirements. Any data stored on data collection devices is removed after data collection for the programme is completed to minimise risk. Where possible, data stored on stolen/lost devices is remotely deleted.

**Training:** Personnel are provided adequate training on maintaining privacy of data collected, including procedures for handling devices to maintain data security.

**Removal of PII:** All PII is removed from the raw dataset and separated into "Identifiers Dataset" and "Analysis Dataset". A common ID is generated to allow re-joining PII data if required. Access to "Identifiers Dataset" is limited to select personnel. Limited and necessary PII is re-shared with enumerators/field supervisors to allow for quality checking and back-checking of data as per programme requirements.



THANK YOU

[www.sattva.co.in](http://www.sattva.co.in)