



भारत सरकार

भारत हवामान विभाग

प्रादेशिक हवामान केंद्र मुंबई - 400005

दी.01/6/2020 रोजी

प्रेस प्रकाशनाची वेळ: 17.00 वाजता

पूर्वेमध्य व लगतच्या नैरुत्य अरबी समुद्रावर कमी दाबाचे क्षेत्र उत्तर महाराष्ट्रासाठी चक्रीवादळ - दक्षिणेकडील गुजरात :

पूर्वेकडील आणि लगतच्या नैरुत्य अरबी समुद्रावरील कमी दाबाचे क्षेत्र मागील 6 तासात 13 किमी प्रतितास वेगाने उत्तरेकडे सरकत आहे आणि आज 1 जून 2020 च्या 1130 तासांच्या निरीक्षण नुसार त्याचे मध्य , अक्षांश 13.7 ° N आणि रेखांश 71.2° E आहे . हे क्षेत्र किमी दक्षिण-पश्चिम दिशेने पंजिम (गोवा) 340 कि.मी , मुंबई (महाराष्ट्र) च्या दक्षिण-नैरुत्येस 630 कि.मी. आणि सुरत (गुजरात) च्या दक्षिण-नैरुत्येकडे 830 कि.मी. दूर आहे .

पुढील 6 तासांत पूर्वपश्चिम आणि लगतच्या नैरुत्य अरबी समुद्रावर हे क्षेत्र तीव्र होऊन त्यानंतरच्या 24 तासांत पूर्वपश्चिम अरबी समुद्रात चक्रीवादळ निर्माण होण्याची शक्यता आहे. सुरुवातीस २ जून रोजी पहाटे, ते उत्तरेकडे सरकेल व नंतर उत्तर-ईशान्येकडे वळणार आहे आणि 3 जूनच्या दुपारी उत्तर महाराष्ट्र व दक्षिण गुजरात ओलांडून हरीहेश्वर (रायगड, महाराष्ट्र) आणि दमण दरम्यान क्रॉस करण्याची शक्यता आहे.

चेतावणी:

1. पाऊस:

वरील प्रणालीच्या प्रभावाखाली महाराष्ट्र विशेषतः पश्चिम किनारपट्टीवर 1 ते 4 जून 2020 या काळात भरपूर पावसाची शक्यता आहे.

- 01 जून रोजी ,दक्षिण कोकण आणि गोवा येथे मुसळधार -अत्यंत मुसळधार पावसाची शक्यता आहे .
- 2 आणि 3 जून ला, दक्षिण कोकण आणि गोवा येथे बहुतेक ठिकाणी मुसळधार ते अति मुसळधार (heavy to very heavy) पाऊस पडण्याची शक्यता आहे.
- 3 आणि, उत्तर कोकण आणि उत्तर मध्य महाराष्ट्रातील बहुतांश ठिकाणी ठिकाणी मुसळधार पावसाची तर एखाद्या ठिकाणी तो अत्यंत मुसळधार पडण्याची शक्यता वर्तवली आहे (heavy to very heavy with isolated extremely heavy falls very likely.)
- ४ जून ला उत्तर कोकण आणि उत्तर मध्य महाराष्ट्रातील बहुतांश ठिकाणी ठिकाणी मुसळधार पावसाची तर एखाद्या ठिकाणी तो अत्यंत मुसळधार पडण्याची शक्यता वर्तवली आहे (heavy to very heavy with isolated extremely heavy falls very likely.)

जिल्हा निहाय पूर्वानुमान आणि चेतावणी

District		1-Jun-20	2-Jun-20	3-Jun-20	4-Jun-20	5-Jun-20
		Mon	Tue	Wed	Thu	Fri
Palghar	<i>Intensity</i>	Light to moderate rain	Heavy rain at isolated places	Extremely heavy rain at isolated places	Extremely heavy rain at isolated places	Light to moderate rain
	<i>Probability</i>	Very Likely	Very Likely	Very Likely	Likely	Likely
Thane	<i>Intensity</i>	Light to moderate rain	Heavy rain at isolated places	Extremely heavy rain at isolated places	Heavy to very heavy rain at a few places	Light to moderate rain
	<i>Probability</i>	Very Likely	Very Likely	Very Likely	Likely	Likely
Mumbai	<i>Intensity</i>	Light to moderate rain	Heavy rain at isolated places	Extremely heavy rain at isolated places	Heavy to very heavy rain at a few places	Light to moderate rain
	<i>Probability</i>	Very Likely	Very Likely	Very Likely	Likely	Likely
Raigad	<i>Intensity</i>	Thunderstorm accompanied with lightning/gusty winds and heavy rain likely at isolated	Heavy to very heavy rain at isolated places	Extremely heavy rain at isolated places	Heavy to very heavy rain at a few places	Light to moderate rain

District		1-Jun-20	2-Jun-20	3-Jun-20	4-Jun-20	5-Jun-20
		Mon	Tue	Wed	Thu	Fri
Ratnagiri	<i>Intensity</i>	Thunderstorm accompanied with lightning/gusty winds and very heavy rain likely at isolated places.	Heavy to very heavy rain at isolated places	Heavy to very heavy rain at isolated places	Heavy to very heavy rain at isolated places	Light to moderate rain
	<i>Probability</i>	Very Likely	Very Likely	Very Likely	Likely	Likely
Sindhudurg	<i>Intensity</i>	Thunderstorm accompanied with lightning/gusty winds and very heavy rain likely at isolated places.	Heavy to very heavy rain at isolated places	Heavy to very heavy rain at isolated places	Heavy to very heavy rain at isolated places	Light to moderate rain
	<i>Probability</i>	Very Likely	Very Likely	Very Likely	Likely	Likely
Dhule	<i>Intensity</i>	Rain / Thunder showers	Light to moderate rain	Extremely heavy rain at isolated places	Extremely heavy rain at isolated places	Light to moderate rain
	<i>Probability</i>	Very Likely	Very Likely	Very Likely	Likely	Likely
Nandurbar	<i>Intensity</i>	Rain / Thunder showers	Light to moderate rain	Extremely heavy rain at isolated places	Extremely heavy rain at isolated places	Light to moderate rain
	<i>Probability</i>	Very Likely	Very Likely	Very Likely	Likely	Likely
Jalgaon	<i>Intensity</i>	Dry	Light to moderate rain	Heavy to very heavy rain at isolated places	Light to moderate rain	Light to moderate rain
	<i>Probability</i>	Very Likely	Very Likely	Very Likely	Likely	Likely

District		1-Jun-20	2-Jun-20	3-Jun-20	4-Jun-20	5-Jun-20
		Mon	Tue	Wed	Thu	Fri
Nasik	<i>Intensity</i>	Thunderstorm accompanied with lightning/gusty winds and heavy rain likely at isolated places	Heavy rain at isolated places	Extremely heavy rain at isolated places	Heavy to very heavy rain at a few places	Light to moderate rain
	<i>Probability</i>	Very Likely	Very Likely	Very Likely	Likely	Likely
Ahmednagar	<i>Intensity</i>	Thunderstorm accompanied with lightning/gusty winds and heavy rain likely at isolated places	Heavy rain at isolated places	Heavy to very heavy rain at isolated places	Heavy rain at isolated places	Light to moderate rain
	<i>Probability</i>	Very Likely	Very Likely	Very Likely	Likely	Likely
Pune	<i>Intensity</i>	Thunderstorm accompanied with lightning/gusty winds and heavy rain likely at isolated places	Heavy rain at isolated places	Heavy to very heavy rain at isolated places	Heavy rain at isolated places	Light to moderate rain
	<i>Probability</i>	Very Likely	Very Likely	Very Likely	Likely	Likely
Kolhapur	<i>Intensity</i>	Thunderstorm accompanied with lightning/gusty winds and heavy rain likely at isolated places	Heavy rain at isolated places	Heavy rain at isolated places	Light to moderate rain	Very light to light rain
	<i>Probability</i>	Very Likely	Very Likely	Very Likely	Likely	Likely
Satara	<i>Intensity</i>	Thunderstorm accompanied with lightning/gusty winds and heavy rain likely at isolated places	Heavy rain at isolated places	Heavy rain at isolated places	Heavy rain at isolated places	Very light to light rain
	<i>Probability</i>	Very Likely	Very Likely	Very Likely	Likely	Likely

District		1-Jun-20	2-Jun-20	3-Jun-20	4-Jun-20	5-Jun-20
		Mon	Tue	Wed	Thu	Fri
Sangli	<i>Intensity</i>	Thunderstorm accompanied with lightning/gusty winds and heavy rain likely at isolated places	Heavy rain at isolated places	Light to moderate rain	Rain / Thunder showers	Very light to light rain
	<i>Probability</i>	Very Likely	Very Likely	Very Likely	Likely	Likely
Sholapur	<i>Intensity</i>	Thunderstorm accompanied with lightning/gusty winds and heavy rain likely at isolated places	Heavy rain at isolated places	Light to moderate rain	Rain / Thunder showers	Very light to light rain
	<i>Probability</i>	Very Likely	Very Likely	Very Likely	Likely	Likely
Aurangabad	<i>Intensity</i>	Thunderstorm accompanied with lightning/gusty winds and heavy rain likely at isolated places	Light to moderate rain	Light to moderate rain	Rain / Thunder showers	Very light to light rain
	<i>Probability</i>	Very Likely	Very Likely	Very Likely	Likely	Likely
Jalna	<i>Intensity</i>	Thunderstorm accompanied with lightning/gusty winds and heavy rain likely at isolated places	Light to moderate rain	Light to moderate rain	Rain / Thunder showers	Very light to light rain
	<i>Probability</i>	Very Likely	Very Likely	Very Likely	Likely	Likely
Parbhani	<i>Intensity</i>	Thunderstorm accompanied with lightning/gusty winds and heavy rain likely at isolated places	Light to moderate rain	Light to moderate rain	Rain / Thunder showers	Very light to light rain
	<i>Probability</i>	Very Likely	Very Likely	Very Likely	Likely	Likely

District		1-Jun-20	2-Jun-20	3-Jun-20	4-Jun-20	5-Jun-20
		Mon	Tue	Wed	Thu	Fri
Beed	<i>Intensity</i>	Thunderstorm accompanied with lightning/gusty winds and heavy rain likely at isolated places	Heavy rain at isolated places	Light to moderate rain	Rain / Thunder showers	Very light to light rain
	<i>Probability</i>	Very Likely	Very Likely	Very Likely	Likely	Likely
Hingoli	<i>Intensity</i>	Thunderstorm accompanied with lightning/gusty winds and heavy rain likely at isolated places	Light to moderate rain	Light to moderate rain	Rain / Thunder showers	Very light to light rain
	<i>Probability</i>	Very Likely	Very Likely	Very Likely	Likely	Likely
Nanded	<i>Intensity</i>	Thunderstorm accompanied with lightning/gusty winds and heavy rain likely at isolated places	Light to moderate rain	Light to moderate rain	Rain / Thunder showers	Very light to light rain
	<i>Probability</i>	Very Likely	Very Likely	Very Likely	Likely	Likely
Latur	<i>Intensity</i>	Thunderstorm accompanied with lightning/gusty winds and heavy rain likely at isolated places	Heavy rain at isolated places	Light to moderate rain	Rain / Thunder showers	Very light to light rain
	<i>Probability</i>	Very Likely	Very Likely	Very Likely	Likely	Likely
Osmanabad	<i>Intensity</i>	Thunderstorm accompanied with lightning/gusty winds and heavy rain likely at isolated places	Heavy rain at isolated places	Light to moderate rain	Rain / Thunder showers	Very light to light rain
	<i>Probability</i>	Very Likely	Very Likely	Very Likely	Likely	Likely

Legends:

No warning (No Action)	Watch (Be updated)	Alert (Be prepared)	Warning (Take Action)
------------------------	--------------------	---------------------	-----------------------

Very light rain	Light rain	Moderate rain	Heavy rainfall	Very Heavy rainfall	Extremely hvy rainfall
-----------------	------------	---------------	----------------	---------------------	------------------------

District		1-Jun-20	2-Jun-20	3-Jun-20	4-Jun-20	5-Jun-20
		Mon	Tue	Wed	Thu	Fri
	Trace-2.4 mm	2.5-15.5 mm	15.6-64.4 mm	64.5-115.5 mm	115.6-204.4 mm	Greater than 204.4mm

Likely	Very Likely	Most Likely
26-50% probability	51-75% probability	Greater than 75% probability

(ii) वेगाची वार्याची चेतावणी

• पुढील ४८ तासांत, दक्षिणपूर्व आणि लगतच्या मध्यपूर्व अरबी समुद्र, लक्षद्वीप क्षेत्रासह आणि केरळ किनारपट्टीवर वादळी वार्या चा वेग 45-55 किमी प्रतितास तर कधी कधी तो 65 किमी प्रतितास पर्यंत सोसाट्याचा इतका असण्याची शक्यता आहे.

- 2 जून सकाळपासून, पूर्वेकडील अरबी समुद्रावर 65 ते 75 किमी प्रतितास वेगाने वाहतील , आणि त्याचा वेग पण वाढेल.
- 3 जून पासून , कर्नाटक-दक्षिण महाराष्ट्राच्या सीमेवर व पूर्वेकडील आणि ईशान्य दिशेला 110 किमी प्रतितास वेगाने वादळी वारे असतील आणि नंतर वेग वाढेल.

Date/Time(IST)	Position (Lat. °N/ long. °E)	Maximum sustained surface wind speed (Kmph)	Category of cyclonic disturbance
01.06.20/1130	13.7/71.2	45-55 gusting to 65	Depression
01.06.20/1730	14.2/71.0	50-60 gusting to 70	Deep Depression
01.06.20/2330	14.7/70.9	55-65 gusting to 75	Deep Depression
02.06.20/0530	15.1/70.9	60-70 gusting to 80	Cyclonic Storm
02.06.20/1130	15.6/71.0	80-90 gusting to 100	Cyclonic Storm
02.06.20/2330	16.8/71.5	90-100 gusting to 110	Severe Cyclonic Storm
03.06.20/1130	18.9/72.7	105-115 gusting to 125	Severe Cyclonic Storm
03.06.20/2330	20.5/74.3	70-80 gusting to 90	Cyclonic Storm
04.06.20/1130	22.0/76.0	45-55 gusting to 65	Depression

Spatial rainfall distribution: Isolated: <25%, A few: 26-50%, Many: 51-75%, Most: 76-100%
rainfall amount (mm): Heavy rain: 64.5 – 115.5, Very heavy rain: 115.6 – 204.4, Extremely heavy rain: 204.5 or more.

(iii)समुद्राची स्थिति

पुढील 48 तासांत पूर्व आणि पूर्वेकडील दक्षिण-पूर्व अरबी समुद्रावर समुद्राची स्थिती आतिशय उफाळलेला असण्याची शक्यता आहे. हे येत्या & 48 तासांत पूर्व-पूर्व आणि दक्षिणपूर्व अरबी समुद्रापासून आणि कर्नाटक-गोवा किनारपट्टीवर व पश्चिमेकडे जाऊ नये.

2 जूनपासून ते महाराष्ट्र किनारपट्टी व पूर्वेकडील अरबी समुद्र आतिशय उफाळलेला असेल.

3 आणि ४ जून ला गुजरात किनारपट्टी सह आणि पूर्वकडील ईशान्य अरबी समुद्राची स्थिती आतिशय उफाळलेला असेल.

मच्छीमार चेतावणी

- मच्छीमारांना 2 जून, पर्यंत दक्षिणपूर्व अरबी समुद्र, लक्षद्वीप क्षेत्रात आणि केरळ किनारपट्टीवर व पुढे जाऊ नये असा सल्ला देण्यात आला आहे;
- 3 जूनपर्यंत, पूर्व मध्य अरबी समुद्र व कर्नाटकच्या किनारपट्टी व त्यापासून दूर राहण्याचा सल्ला देण्यात येत आहे.
- ४ जून च्या दरम्यान महाराष्ट्र किनारपट्टीच्या पूर्वकडील अरबी समुद्री किनारपट्टी व ईशान्य अरबी समुद्र व गुजरात किनारपट्टी वर जाऊनये.

४. पोर्ट चेतावणी

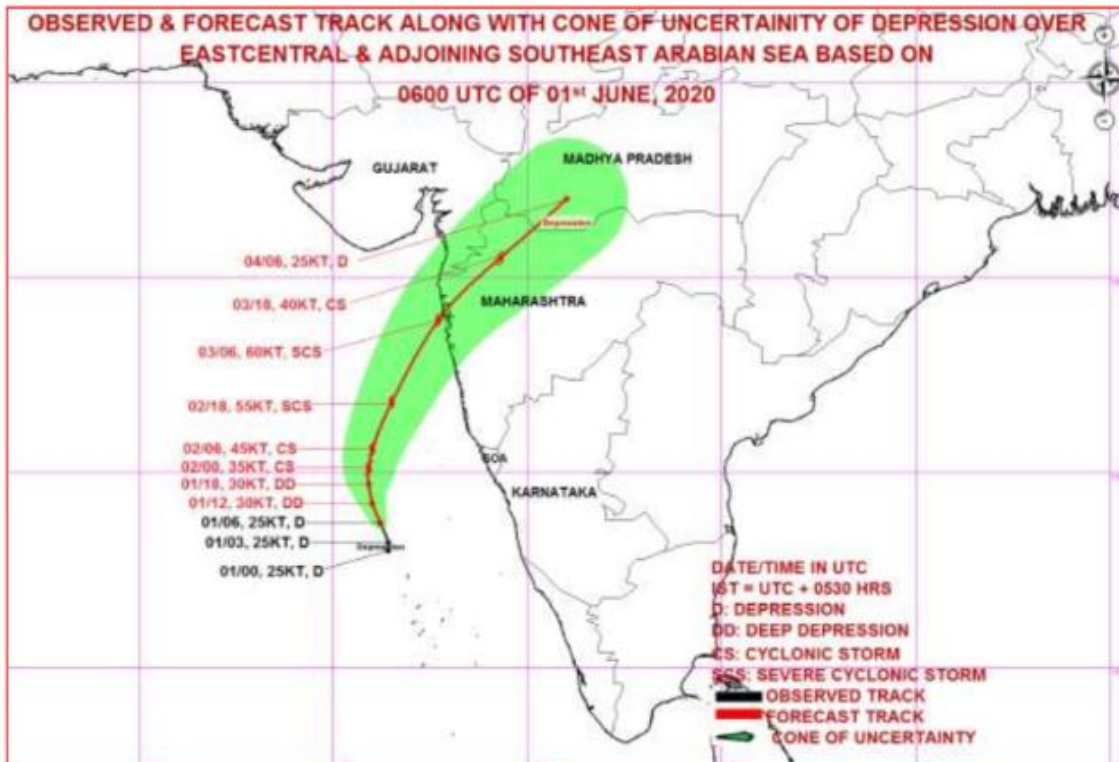
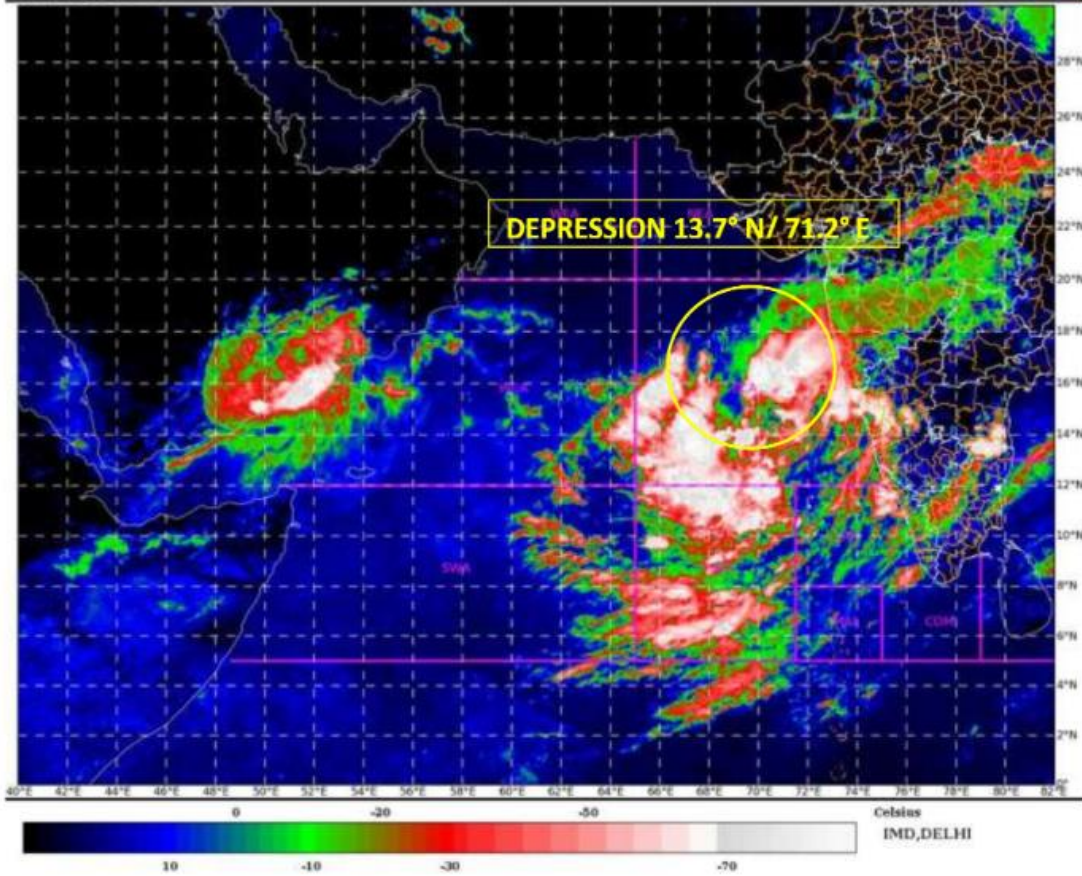
दक्षिण किनारपट्टीवरील ओमान आणि त्याशेजारी येमेनमधील कमी दाबाचे क्षेत्र मागील 06 तासांत 07 किमी प्रतितास वेगाने पश्चिमेकडे सरकली आणि आज 31 मे 2020 रोजी अक्षांश १.0.० डिग्री सेल्सियस आणि रेखांश .5 53.° डिग्री सेल्सियस जवळपास km० कि.मी.च्या मध्यभागी होती. सलालाह (ओमान) च्या पश्चिमेस आणि अल-घयदा (येमेन) च्या पूर्व-ईशान्य दिशेस 160 किमी. पुढील 12 तासांमध्ये कमी दाबाचे क्षेत्र तीव्र राहिल आणि त्यानंतर हळूहळू कमकुवत होण्याची शक्यता आहे. पुढील 24 तासांत हळूहळू पश्चिम-नैwत्य दिशेने जाण्याची शक्यता आहे.

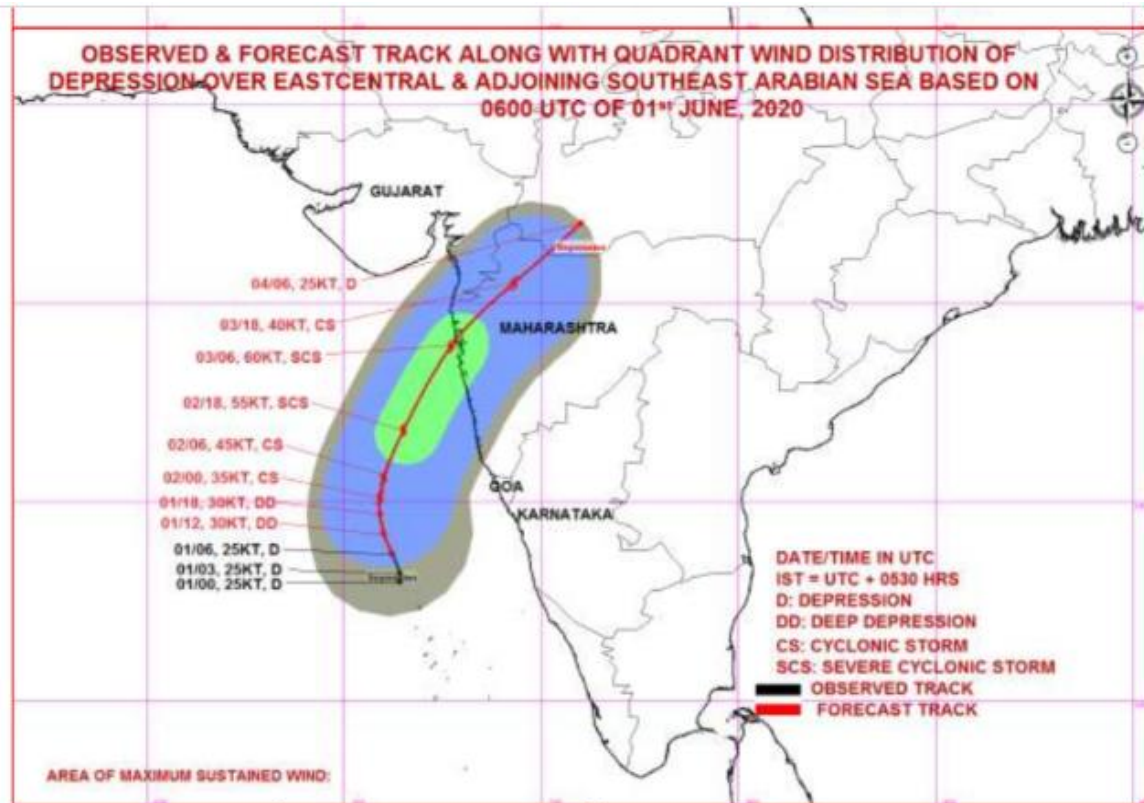
महाराष्ट्र-गोवा किनारपट्टीवरील सर्व बंदरांवर सिग्नल क्रमांक-डी -१ अंतर सावधगिरीचा -१ बावटा लावण्यात आलेला आहे

पुढील तपशील आयएमडी मुख्यालय आणि आयएमडी मुंबईच्या वेबसाइटवर उपलब्ध आहेत. कृपया सध्याच्या अधिक आणि हवामान अद्यतनांसाठी आयएमडी वेबसाइट <http://www.imd.gov.in> किंवा <http://www.imdmumbai.gov.in> वर कृपया भेट द्या.

प्रादेशिक हवामान केन्द्र , मुंबई

फोन:+91022 22150431/22174719/22174735





MSW(knot)/kmph)	Impact	Action
28-33 / (52-61)	Very rough seas.	Total suspension of fishing operations
34-40/(62-74)	High to very high seas	Total suspension of fishing operations
41-63/(75-117)	Very High seas	Total suspension of fishing operations

Spatial rainfall distribution: Isolated: <25%, A few: 26-50%, Many: 51-75%, Most: 76-100%
 all amount (mm): Heavy rain: 64.5 – 115.5, Very heavy rain: 115.6 – 204.4, Extremely heavy rain: 204.5 or more.